



Who are we?

As a public Further Education and Training (FET) provider, Elangeni College for FET strives to be a self-reliant Further Education and Training College that provides meaningful education and training. This will equip you with the qualifications and skills to start out on a chosen career path.

With Elangeni College, support is given to Life Long Learning and students are taught by trained assessors and moderators that ensure quality delivery in an assortment of subject fields. The programmes offered are customized and responsive to the needs of learners and industry; the careers they encourage are essential for the economic upliftment of the South African economy. An FET vocational programme will equip you for a successful career in an industry that has great need for your practical skills, experience and knowledge.

FET College play a catalytic role in the economic empowerment of people by providing relevant education and training; with six campuses throughout Durban, Elangeni College provinces integrated theoretical and practical experience to the community. Make the right choice now and get your future on track!



Inanda Campus

Towards

Betterment

Eight
Campuses

Full Time
Programmes

Part-time
Programmes

Distance
Education

www.elangeni.edu.za

INANDA CAMPUS

131 of Street 108812, Inanda
Tel: 031 519 0933

CENTRAL OFFICE

General Enquiries: info@elangeni.edu.za
Tel: 031 716 6700 | Fax: 031 716 6777
Physical: 15 Portsmouth Road, Pinetown, 3600
Postal: Private Bag X9032, Pinetown, 3610

Inanda

NATED PROGRAMMES

ENGINEERING (N2-N3)

Mechanical Engineering
Electrical Engineering

ENGINEERING (N4-N6)

Electrical Engineering

Mathematics (N 4, 5 & 6)	Electrotechnics (N 4, 5 & 6)
Industrial Electronics (N 4, 5 & 6)	Engineering Science (N 4)
Power Machines (N 5 & 6)	

Employment Opportunities: Certified Electrical Engineer, Site Foreman

Mechanical Engineering

Mathematics (N 4, 5 & 6)	Supervisory Management (N 4, 5 & 6)
Mechanotechnics (N 4, 5 & 6)	Strengths of Material & Structures (N 5 & 6)
Engineering Science (N 4)	

Employment Opportunities: Certified Mechanical Engineer, Site Foreman

BUSINESS PROGRAMMES (N4-N6)

Business Management

Computer Practice (N 4, 5 & 6)	Management Communication (N 4)
Entrepreneurship (EBM) (N 4, 5 & 6)	Sales Management (N 5 & 6)
Financial Accounting (N 4, 5 & 6)	

Employment Opportunities: Business Sector, Office Manager, Public Sector

Management Assistant

Computer Practice (N 4, 5 & 6)	Information Processing (N 4, 5 & 6)
Entrepreneurship (EBM) (N 4, 5 & 6)	Communication (N 4, 5 & 6)
Office Practice (N 4, 5 & 6)	

Employment Opportunities: Personal Assistant, Typist, Administrator, Receptionist, Secretary

SKILLS PROGRAMMES (6 MONTHS LEVEL)

- Basic Computer Skills
- New Venture Creation

ENROLMENT

For annual programmes, students must pre-enrol at the end of the year, for the following academic year. Enrolment forms must be accompanied by proof of payment of the non-refundable registration fee. Please bring a certified copy of your id and latest school report or certificate for enrolment purposes. Contact the campus for further information. All courses are subject to student numbers.

COURSE FEES

Fees are payable strictly in advance, are subject to change and non-refundable. Cash is not accepted on premises. When enrolling, you will be provided with banking details in order to deposit fees at any branch of First National Bank.

BURSARY

Elangeni College now offers bursaries for qualifying NCV and Nated students (through the DHET Financial Aid Scheme). Interested applicants must contact their nearest campus for more details or application information. Applications may be submitted when registering for an Elangeni College programme. Terms & Conditions apply.

ACCOMMODATION

A ladies hostel is available at Pinetown Campus.

STUDENT SUPPORT SERVICES (SSS):

Are available to our students. These include: academic support, tutorials, bursary assistance, career guidance, counselling, life skills programme, etc.

Please Note: NCV Engineering and ICT programmes have maths as a compulsory subject. All other programmes have maths literacy. Proficiency will be required accordingly.

*NQF: National Qualifications Framework



NATIONAL CERTIFICATE VOCATIONAL

Finance Economics and Accounting

English First Additional Language, Mathematics & Life Orientation

Applied Accounting (NQF 2, 3 & 4)	Economic Environment (NQF 2, 3 & 4)
Financial Management (NQF 2, 3 & 4)	New Venture Creation (NQF 2, 3 & 4)

Career Opportunities: Private and Public Accounting, Investment Brokering, Financial Management, Banking, Financial Services, etc.

Safety in Society

SAFETY IN SOCIETY (Please note that this programme has specific additional entry requirements. Enquire with Inanda Campus for more information.)

Introduction to Governance (NQF 2)	Criminal Justice Structures & Mandates (NQF 3)
Introduction to Law (NQF 2)	Theory of Policing Practices (NQF 3)
Principles of Criminal Justice (NQF 2)	Law Procedures & Evidence (NQF 4)
Introduction to Policing Practices (NQF 2)	Criminal Justice Process (NQF 4)
Governance (NQF 3 & 4)	Applied Policing (NQF 4)
Criminal Law (NQF 3)	

Career Opportunities: South African National Defense Force, South African Police Service, Ministry of Defense



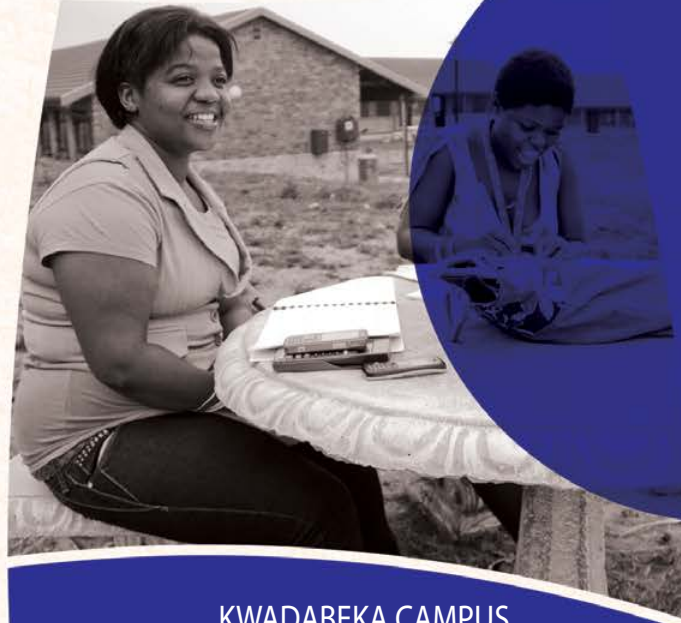
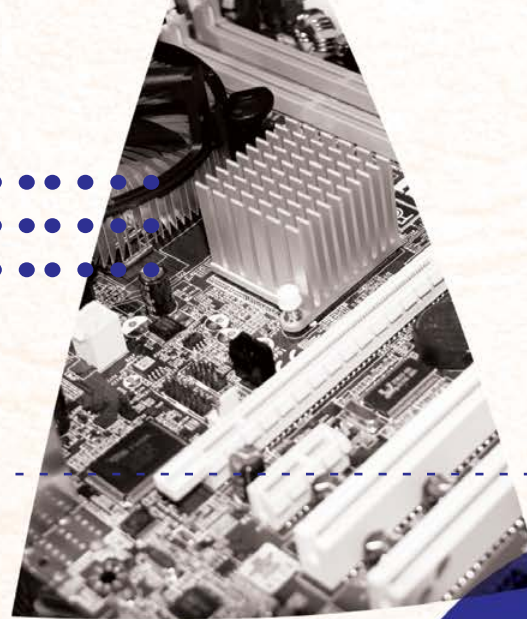


Who are we?

As a public Further Education and Training (FET) provider, Elangeni College for FET strives to be a self-reliant Further Education and Training College that provides meaningful education and training. This will equip you with the qualifications and skills to start out on a chosen career path.

With Elangeni College, support is given to Life Long Learning and students are taught by trained assessors and moderators that ensure quality delivery in an assortment of subject fields. The programmes offered are customized and responsive to the needs of learners and industry; the careers they encourage are essential for the economic upliftment of the South African economy. An FET vocational programme will equip you for a successful career in an industry that has great need for your practical skills, experience and knowledge.

FET College play a catalytic role in the economic empowerment of people by providing relevant education and training; with six campuses throughout Durban, Elangeni College provinces integrated theoretical and practical experience to the community. Make the right choice now and get your future on track!



KwaDabeka Campus

Towards

Betterment

Eight
Campuses

Full Time
Programmes

Part-time
Programmes

Distance
Education

www.elangeni.edu.za

KWADABEKA CAMPUS

141 Khululeka Road, Clermont

Tel: 031 711 0313

CENTRAL OFFICE

General Enquiries: info@elangeni.edu.za

Tel: 031 716 6700 | Fax: 031 716 6777

Physical: 15 Portsmouth Road, Pinetown, 3600

Postal: Private Bag X9032, Pinetown, 3610

KwaDabeka

NATIONAL CERTIFICATE VOCATIONAL

(NQF* level 2, 3 and 4)

Minimum requirement to enter NQF level 2: Grade 9 pass or equivalent.

Duration: 1 year full-time study per NQF level.

The NCV consists of three fundamental subjects and four core subjects per programme.

Electrical Infrastructure Construction

English First Additional Language, Mathematics & Life Orientation

Electrical Principles & Practice (NQF 2, 3 & 4)	Electrical Systems & Construction (NQF 2, 3 & 4)
Workshop Practice (NQF 2)	Electrical Workmanship (NQF 3 & 4)
Electronic Control & Digital Electronics (NQF 2, 3 & 4)	

Career Opportunities: Sound Technology, Industrial and Technical Engineering, Electrical Engineer, Heavy and Light Current

Engineering and Related Design

English First Additional Language, Mathematics & Life Orientation

Engineering Fundamentals (NQF 2)	Materials Technology (NQF 3)
Engineering Technology (NQF 2)	Engineering Graphics & Design (Auto CAD) (NQF 3)
Engineering Systems (NQF 2)	Engineering Process (NQF 4)
Automotive Repair & Maintenance OR Welding (NQF 2, 3 & 4)	Professional Engineering Practice (NQF 4)
Engineering Practice & Maintenance (NQF 3)	Applied Engineering Technology (NQF 4)

Career Opportunities: Tool Making, Fitting and Machining, Petroleum Engineering, Automotive Repairs, Welder, etc.

Human Resource Management

Computer Practice (N 4, & 5)	Management Communication (N 4, & 5)
Entrepreneurship (Ebm) (N 4, & 5)	Mercantile Law (N 6)
Personnel Management (N 4, 5 & 6)	Labour Relations (N 6)

National Diploma: Human Resource Manager / Assistant, Self Employment, Public Sector

NATED COURSES

(Level: N4, N5 & N6)

Business Programmes

Business Management

Computer Practice (N 4, 5 & 6)	Management Communication (N 4 only)
Entrepreneurship (EBM) (N 4, 5 & 6)	Sales Management (N 5 & 6)
Financial Accounting (N 4, 5 & 6)	

Employment Opportunities: Business Sector, Office Manager, Self-Employment, Public Sector

Management Assistant

Communication (N 4, 5 & 6)	Office Practice (N 4, 5 & 6)
Computer Practice or Entrepreneurship (EMB) (N 4 & 5)	Computer Practice (N 6)
Information Processing (N 4, 5 & 6)	

Employment Opportunities: Personal Assistant, Typist, Administrator, Receptionist, Secretary

ENGINEERING N2-N3

Electrical Engineering
Mechanical Engineering

ENGINEERING N4-N6

Electrical Engineering

Mathematics (N 4, 5 & 6)	Electrotechnics (N 4, 5 & 6)
Industrial Electronics (N 4, 5 & 6)	Engineering Science (N 4, 5 & 6)

Career Opportunities: Certified Electrical Engineer, Site Foreman

Mechanical Engineering

Mathematics (N 4, 5 & 6)	Supervisory Management (N 4, 5 & 6)
Industrial Electronics (N 4)	Mechanotechnics (N 5 & 6)
Engineering Science (N 4)	Strengths of Materials & Structures (N 5 & 6)

Employment Opportunities: Certified Mechanical Engineer, Site Foreman

SKILLS PROGRAMMES

- Basic Computer Skills
- Motor Vehicle Repairs
- New Venture Creation

ENROLMENT

For annual programmes, students must pre-enrol at the end of the year, for the following academic year. Enrolment forms must be accompanied by proof of payment of the non-refundable registration fee. Please bring a certified copy of your id and latest school report or certificate for enrolment purposes. Contact the campus for further information. All courses are subject to student numbers.

COURSE FEES

Fees are payable strictly in advance, are subject to change and non-refundable. Cash is not accepted on premises. When enrolling, you will be provided with banking details in order to deposit fees at any branch of First National Bank.

BURSARY

Elangeni College now offers bursaries for qualifying NCV and Nated students (through the DHET Financial Aid Scheme). Interested applicants must contact their nearest campus for more details or application information. Applications may be submitted when registering for an Elangeni College programme. Terms & Conditions apply.

ACCOMMODATION

A ladies hostel is available at Pinetown Campus.

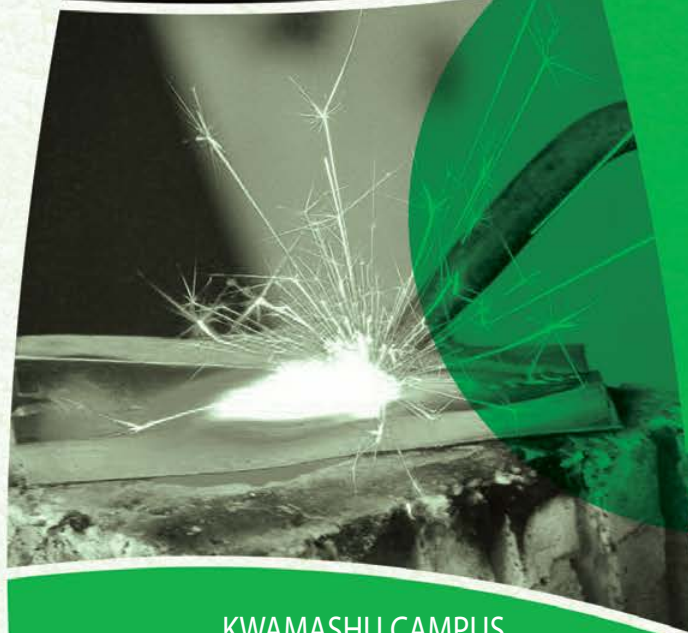
STUDENT SUPPORT SERVICES (SSS):

Are available to our students. These include: academic support, tutorials, bursary assistance, career guidance, counselling, life skills programme, etc.

Please Note: NCV Engineering and ICT programmes have maths as a compulsory subject. All other programmes have maths literacy. Proficiency will be required accordingly.

*NQF: National Qualifications Framework





Who are we?

As a public Further Education and Training (FET) provider, Elangeni College for FET strives to be a self-reliant Further Education and Training College that provides meaningful education and training. This will equip you with the qualifications and skills to start out on a chosen career path.

With Elangeni College, support is given to Life Long Learning and students are taught by trained assessors and moderators that ensure quality delivery in an assortment of subject fields. The programmes offered are customized and responsive to the needs of learners and industry; the careers they encourage are essential for the economic upliftment of the South African economy. An FET vocational programme will equip you for a successful career in an industry that has great need for your practical skills, experience and knowledge.

FET College play a catalytic role in the economic empowerment of people by providing relevant education and training; with six campuses throughout Durban, Elangeni College provinces integrated theoretical and practical experience to the community. Make the right choice now and get your future on track!

Towards

Betterment

Eight
Campuses

Full Time
Programmes

Part-time
Programmes

Distance
Education

KwaMashu Campus

KWAMASHU CAMPUS

F5 Mandela Road, KwaMashu
Tel: 031 503 9708

CENTRAL OFFICE

General Enquiries: info@elangeni.edu.za
Tel: 031 716 6700 | Fax: 031 716 6777
Physical: 15 Portsmouth Road, Pinetown, 3600
Postal: Private Bag X9032, Pinetown, 3610

www.elangeni.edu.za

KwaMashu

NATIONAL CERTIFICATE VOCATIONAL

(NQF* Level 2, 3 & 4)

Minimum Requirement: Grade 9 Pass Or Equivalent.

Duration: 1 Year Full-Time Study Per Nqf Level.

The Ncv Consists Of Three Fundamental Subjects And Four Core Subjects Per Programme.

Information Technology & Computer Science

English First Additional Language, Mathematics & Life Orientation

Introduction To Information Systems (NQF 2)	Principles Of Computer Programming (NQF 3)
Electronics (NQF 2)	Electronic Control & Digital Electronics (NQF 3)
Introduction To Systems Development (NQF 2)	System Analysis & Design (NQF 4)
Digital Electronics (NQF 2)	Data Communication & Networking (NQF 4)
System Analysis & Design (NQF 3)	Computer Programming (NQF 4)
Computer Hardware & Software (NQF 3)	Electronic Control & Digital Electronics (NQF 4)

Career Opportunities: Computer Programming, Information Technology Management, Computer Systems, Engineering, Data Processing, etc.

Hospitality

English First Additional Language, Mathematics & Life Orientation

Hospitality Generics (NQF 2, 3 & 4)	Food Preparation (NQF 2, 3 & 4)
Hospitality Services (NQF 2, 3 & 4)	Client Services & Human Relations (NQF 2, 3 & 4)

Career Opportunities: Hotel Management, Chef, Accommodation Management, Bed & Breakfast, Breakfast Services, Event Management, House Keeping etc.

Office Administration

English First Additional Language, Mathematics & Life Orientation

Business Practice (NQF 2, 3 & 4)	Office Data Processing (NQF 2, 3 & 4)
Office Practice (NQF 2, 3 & 4)	Applied Accounting Or New Ventures Creation (NQF 2, 3 & 4)

Career Opportunities: Office Management, Admin Clerk, Filing Clerk, Receptionist, Telephonist, General Administration, etc.

NATED COURSES

Level: N4, N5 And N6

Duration: 6 Months Per Level (Full Time)

Minimum Requirements: N4 (Senior Certificate Or National Certificate N3 Or Grade 12 Or An Equivalent Qualification. An Admission Test May Be Required).

National Diploma: All Students Who Have Completed Their N6 Certificate Are Required To Complete 18 Months Of Practical In-Service Training In Their Relevant Field Of Study (Certified By The Employer), To Qualify For A National 'N' Diploma (NQF).

Financial Management

Management Communication (N 4)	Entrepreneurship (EBM) / Income Tax (N 4, 5 & 6)
Financial Accounting (N 4, 5 & 6)	Cost & Management Accounting (N 5 & 6)
Computerised Financial Systems (N 4, 5 & 6)	

National Diploma: Financial Manager, Bookkeeping, Accounting, Self Employment

Management Assistant

Communication (N 4, 5 & 6)	Information Processing (N 4, 5 & 6)
Computer Practice (N 4, 5 & 6)	Office Practice (N 4, 5 & 6)
Entrepreneurship (Ebm) (N 4, & 5)	

National Diploma: Personal Assistant, Typist, Administrator, Receptionist, Secretary

Human Resource Management

Computer Practice (N 4, & 5)	Management Communication (N 4, & 5)
Entrepreneurship (Ebm) (N 4, & 5)	Mercantile Law (N 6)
Personnel Management (N 4, 5 & 6)	Labour Relations (N 6)

National Diploma: Human Resource Manager / Assistant, Self Employment, Public Sector

SKILLS COURSES (FULL TIME)

Duration: 6 Months

- Basic Computer Skills
- Mail & Internet User
- New Venture Creation
- Refrigeration
- Technical Support

Part – time Courses Are Also Offered, Please Enquire At The Campus

ENROLMENT

For annual programmes, students must pre-enrol at the end of the year, for the following academic year. Enrolment forms must be accompanied by proof of payment of the non-refundable registration fee. Please bring a certified copy of your id and latest school report or certificate for enrolment purposes. Contact the campus for further information. All courses are subject to student numbers.

COURSE FEES

Fees are payable strictly in advance, are subject to change and non-refundable. Cash is not accepted on premises. When enrolling, you will be provided with banking details in order to deposit fees at any branch of First National Bank.

BURSARY

Elangeni College now offers bursaries for qualifying NCV and Nated students (through the DHET Financial Aid Scheme). Interested applicants must contact their nearest campus for more details or application information. Applications may be submitted when registering for an Elangeni College programme. Terms & Conditions apply.

ACCOMMODATION

A ladies hostel is available at Pinetown Campus.

STUDENT SUPPORT SERVICES (SSS):

Are available to our students. These include: academic support, tutorials, bursary assistance, career guidance, counselling, life skills programme, etc.

Please Note: NCV Engineering and ICT programmes have maths as a compulsory subject. All other programmes have maths literacy. Proficiency will be required accordingly.

*NQF: National Qualifications Framework





Who are we?

As a public Further Education and Training (FET) provider, Elangeni College for FET strives to be a self-reliant Further Education and Training College that provides meaningful education and training. This will equip you with the qualifications and skills to start out on a chosen career path.

With Elangeni College, support is given to Life Long Learning and students are taught by trained assessors and moderators that ensure quality delivery in an assortment of subject fields. The programmes offered are customized and responsive to the needs of learners and industry; the careers they encourage are essential for the economic upliftment of the South African economy. An FET vocational programme will equip you for a successful career in an industry that has great need for your practical skills, experience and knowledge.

FET College play a catalytic role in the economic empowerment of people by providing relevant education and training; with six campuses throughout Durban, Elangeni College provinces integrated theoretical and practical experience to the community. Make the right choice now and get your future on track!



Mpumalanga Campus

MPUMALANGA CAMPUS

280 Shezi Main Road, Mpumalanga
Tel: 031 771 0148/2568

CENTRAL OFFICE

General Enquiries: info@elangeni.edu.za
Tel: 031 716 6700 | Fax: 031 716 6777
Physical: 15 Portsmouth Road, Pinetown, 3600
Postal: Private Bag X9032, Pinetown, 3610

Towards

Betterment

Eight
Campuses

Full Time
Programmes

Part-time
Programmes

Distance
Education

www.elangeni.edu.za

Mpumalanga

NATIONAL CERTIFICATE VOCATIONAL

(NQF* level 2, 3 and 4)

Minimum requirement to enter NQF level 2: Grade 9 pass or equivalent.

Duration: 1 year full-time study per NQF level.

The NCV consists of three fundamental subjects and four core subjects per programme.

Electrical Infrastructure Construction

English First Additional Language, Mathematics & Life Orientation

Electrical Principles & Practice (NQF 2, 3 & 4)	Electrical Systems & Construction (NQF 2, 3 & 4)
Workshop Practice (NQF 2)	Electrical Workmanship (NQF 3 & 4)
Electronic Control & Digital Electronics (NQF 2, 3 & 4)	
Career Opportunities: Sound Technology, Industrial and Technical Engineering, Electrical Engineer, Heavy and Light Current	

Information Technology & Computer Science

English First Additional Language, Mathematics & Life Orientation

Introduction to Information Systems (NQF 2)	Principles of Computer Programming (NQF 3)
Electronics (NQF 2)	Project Management (Pinetown & Mpumalanga) Or Electronics Control & Digital Electronic (KwaMashu & Pinetown) (NQF 3 & 4)
Introduction to Systems Development (NQF 2)	Data Communication & Networking (NQF 4)
Entrepreneurship (Mpumalanga) Or Electronics Control & Digital Electronics (KwaMashu & Pinetown) (NQF 2)	Computer Programming (NQF 4)
Systems Analysis & Design (NQF 3 & 4)	Computer Hardware & Software (NQF 3)
Career Opportunities: Data Processor, Computer Programming, Information Technology Management, Computer Systems Engineering	

Hospitality

English First Additional Language, Mathematics & Life Orientation

Hospitality Generics (NQF 2, 3 & 4)	Food Preparation (NQF 2, 3 & 4)
Hospitality Services (NQF 2, 3 & 4)	Client Services & Human Relations (NQF 2, 3 & 4)
Career Opportunities: Food and Beverage Management, Hotel Management, Chef, Accommodation Management, Bed and Breakfast Services, Event Management, Housekeeping	

Office Administration

English First Additional Language, Mathematics & Life Orientation

Business Practice (NQF 2, 3 & 4)	Office Data Processing (NQF 2, 3 & 4)
Office Practice (NQF 2, 3 & 4)	Applied Accounting Or New Venture Creation (NQF 2, 3 & 4)
Career Opportunities: Office Management, Admin Clerk, Filing Clerk, Secretary, Receptionist, Telephonist, General Administrator	

Primary Agriculture

English First Additional Language, Mathematics & Life Orientation

Soil Science (NQF 2 & 3)	Agri-Business (NQF 2 & 3)
Plant Production (NQF 2 & 3)	Farm Planning & Mechanisation (NQF 4)
Animal Production (NQF 2 & 3)	Advanced Plant Production (NQF 4)
Career Opportunities: Farm Management, Farmer, Forestry, Botany, Agricultural Sciences, Soil Science, Food Technology, Viticulture	

NATED COURSES: BUSINESS STUDIES

Level: N4, N5 and N6

Duration: 6 Months per level (Part-time/Distance options available on enquiry)

Minimum Requirements: N4 (Senior Certificate or National Certificate NE or Grade 12 or an equivalent qualification. An admission test may be required).

National Diploma: All students who have completed their N6 certificate are required to complete 18 months of practical in-service training in their relevant field of study (certified by the employer), to qualify for a National 'N' Diploma (NQF 5).

Management Assistant

Communication (N 4, 5 & 6)	Information Processing (N 4, 5 & 6)
Computer Practice (N 4, 5 & 6)	Office Practice (N 4, 5 & 6)

SKILLS PROGRAMMES (6 MONTHS LEVEL)

Basic Computer Skills

NATED COURSES: ENGINEERING STUDIES (N2 - N3)

Electrical Engineering

ENROLMENT

For annual programmes, students must pre-enrol at the end of the year, for the following academic year. Enrolment forms must be accompanied by proof of payment of the non-refundable registration fee. Please bring a certified copy of your id and latest school report or certificate for enrolment purposes. Contact the campus for further information. All courses are subject to student numbers.

COURSE FEES

Fees are payable strictly in advance, are subject to change and non-refundable. Cash is not accepted on premises. When enrolling, you will be provided with banking details in order to deposit fees at any branch of First National Bank.

BURSARY

Elangeni College now offers bursaries for qualifying NCV and Nated students (through the DHET Financial Aid Scheme). Interested applicants must contact their nearest campus for more details or application information. Applications may be submitted when registering for an Elangeni College programme. Terms & Conditions apply.

ACCOMMODATION

A ladies hostel is available at Pinetown Campus.

STUDENT SUPPORT SERVICES (SSS):

Are available to our students. These include: academic support, tutorials, bursary assistance, career guidance, counselling, life skills programme, etc.

Please Note: NCV Engineering and ICT programmes have maths as a compulsory subject. All other programmes have maths literacy. Proficiency will be required accordingly.

*NQF: National Qualifications Framework



Who are we?

As a public Further Education and Training (FET) provider, Elangeni College for FET strives to be a self-reliant Further Education and Training College that provides meaningful education and training. This will equip you with the qualifications and skills to start out on a chosen career path.

With Elangeni College, support is given to Life Long Learning and students are taught by trained assessors and moderators that ensure quality delivery in an assortment of subject fields. The programmes offered are customized and responsive to the needs of learners and industry; the careers they encourage are essential for the economic upliftment of the South African economy. An FET vocational programme will equip you for a successful career in an industry that has great need for your practical skills, experience and knowledge.

FET College play a catalytic role in the economic empowerment of people by providing relevant education and training; with six campuses throughout Durban, Elangeni College provinces integrated theoretical and practical experience to the community. Make the right choice now and get your future on track!



Elangeni College
Technical Vocational Education and Training



Towards

Betterment

Eight
Campuses

Full Time
Programmes

Part-time
Programmes

Distance
Education

Ndwedwe Campus



NDWEDWE CAMPUS

P100 Main Road, Ndwedwe

Tel: 074 582 9178

CENTRAL OFFICE

General Enquiries: info@elangeni.edu.za

Tel: 031 716 6700 | Fax: 031 716 6777

Physical: 15 Portsmouth Road, Pinetown, 3600

Postal: Private Bag X9032, Pinetown, 3610

www.elangeni.edu.za

CAMPUS BROCHURE

Ndwedwe

NATIONAL CERTIFICATE VOCATIONAL

(NQF* level 2, 3 and 4)

Minimum requirement to enter NQF level 2: Grade 9 pass or equivalent.

Duration: 1 year full-time study per NQF level.

The NCV consists of three fundamental subjects and four core subjects per programme.

Civil Engineering And Building Construction

English First Additional Language, Mathematics & Life Orientation

Construction Planning (NQF 2)	Construction Plant & Equipment (NQF 3)
Plant and Equipment (NQF 2)	Construction Materials (NQF 3 & 4)
Materials (NQF 2)	Construction Masonry & Tiling OR Construction Plumbing (NQF 3)
Masonry & Tiling OR Carpentry & Roof Work Plumbing (NQF 2)	Construction Supervision (NQF 4)
Drawings, Setting out, Quantities and Costing (NQF 3 & 4)	Civil & Construction Technology (NQF 4)

Career Opportunities: Plumbing, Carpentry, Masonry and Tiling, Architectural Technology, Town Planning, Quantity Surveying, Foreman, etc

Tourism

English First Additional Language, Mathematics & Life Orientation

Science of Tourism (NQF 2, 3 & 4)	Sustainable Tourism in South Africa (NQF 2, 3 & 4)
Client Services and Human Relations (NQF 2, 3 & 4)	Tourism Operation (NQF 2, 3 & 4)

Career Opportunities: Accommodation Management, Tourism Manager, Conference and Event Management, Travel Agent, Transportation Management, etc

Office Administration

Business Practice (NQF 2, 3 & 4)	Applied Accounting OR New Venture Creation (NQF 2 & 3)
Office Practice (NQF 2, 3 & 4)	Applied Accounting (NQF 4)
Office Data Processing (NQF 2, 3 & 4)	

Career Opportunities: Office Management, Admin Clerk, Filing Clerk, Secretary, Receptionist, Telephonist, General Administrator

SKILLS PROGRAMMES (6 MONTHS LEVEL)

Basic Computer Skills
Bricklaying

PART – TIME courses are also offered, please enquire at the campus



NATED (N4, N5 & N6)

Duration: 6 Months per level (Full time)

Minimum Requirements: N4 (Senior Certificate or National Certificate NE or Grade 12 or an equivalent qualification. An admission test may be required).

National Diploma: All students who have completed their N6 certificate are required to complete 18 months of practical in-service training in their relevant field of study (certified by the employer), to qualify for a National 'N' Diploma (NQF).

Public Management

Public Administration (N 4, 5 & 6)	Municipal Administration (N 5 & 6)
Computer Practice (N 4)	Public Relations (N 5)
Management Communication (N 4)	Public Law (N 6)
Entrepreneurship & Business Management (N 4)	Public Finance (N 5)
Public Finance (N 5)	

ENROLMENT

For annual programmes, students must pre-enrol at the end of the year, for the following academic year. Enrolment forms must be accompanied by proof of payment of the non-refundable registration fee. Please bring a certified copy of your id and latest school report or certificate for enrolment purposes. Contact the campus for further information. All courses are subject to student numbers.

COURSE FEES

Fees are payable strictly in advance, are subject to change and non-refundable. Cash is not accepted on premises. When enrolling, you will be provided with banking details in order to deposit fees at any branch of First National Bank.

BURSARY

Elangeni College now offers bursaries for qualifying NCV and Nated students (through the DHET Financial Aid Scheme). Interested applicants must contact their nearest campus for more details or application information. Applications may be submitted when registering for an Elangeni College programme. Terms & Conditions apply.

ACCOMMODATION

A ladies hostel is available at Pinetown Campus.

STUDENT SUPPORT SERVICES (SSS):

Are available to our students. These include: academic support, tutorials, bursary assistance, career guidance, counselling, life skills programme, etc.

Please Note: NCV Engineering and ICT programmes have maths as a compulsory subject. All other programmes have maths literacy. Proficiency will be required accordingly.

*NQF: National Qualifications Framework



Who are we?

As a public Further Education and Training (FET) provider, Elangeni College for FET strives to be a self-reliant Further Education and Training College that provides meaningful education and training. This will equip you with the qualifications and skills to start out on a chosen career path.

With Elangeni College, support is given to Life Long Learning and students are taught by trained assessors and moderators that ensure quality delivery in an assortment of subject fields. The programmes offered are customized and responsive to the needs of learners and industry; the careers they encourage are essential for the economic upliftment of the South African economy. An FET vocational programme will equip you for a successful career in an industry that has great need for your practical skills, experience and knowledge.

FET College play a catalytic role in the economic empowerment of people by providing relevant education and training; with six campuses throughout Durban, Elangeni College provinces integrated theoretical and practical experience to the community. Make the right choice now and get your future on track!



Ntuzuma Campus

Towards

Betterment

Eight
Campuses

Full Time
Programmes

Part-time
Programmes

Distance
Education

www.elangeni.edu.za

NTUZUMA CAMPUS

384 Ithendele Drive, Ntuzuma
Tel: 031 509 1924/074 588 1706

CENTRAL OFFICE

General Enquiries: info@elangeni.edu.za
Tel: 031 716 6700 | Fax: 031 716 6777
Physical: 15 Portsmouth Road, Pinetown, 3600
Postal: Private Bag X9032, Pinetown, 3610

Ntuzuma

NATIONAL CERTIFICATE VOCATIONAL

(NQF* level 2, 3 and 4)

Minimum requirement to enter NQF level 2: Grade 9 pass or equivalent.

Duration: 1 year full-time study per NQF level.

The NCV consists of three fundamental subjects and four core subjects per programme.

Civil Engineering and Building Construction

English First Additional Language, Mathematics & Life Orientation

Construction Planning (NQF 2)	Construction Plant & Equipment (NQF 3)
Plant and Equipment (NQF 2)	Construction Materials (NQF 3)
Materials (NQF 2)	Construction Carpentry & Roof Work OR Construction Masonry & Tiling OR Construction Plumbing (NQF 3)
Carpentry & Roof Work or Masonry & Filing or Plumbing (NQF 2)	Construction Supervision (NQF 4)
Drawings, Setting Out, Quantities & Costing (NQF 3 & 4)	Construction Materials (NQF 4)
Civil & Construction Technology (NQF 4)	

Career Opportunities: Plumbing, Carpentry, Masonry and Tiling, Architectural Technology, etc

Electrical Infrastructure Construction

English First Additional Language, Mathematics & Life Orientation

Electrical Principles & Practice (NQF 2, 3 & 4)	Electrical Systems & Construction (NQF 2, 3 & 4)
Workshop Practice (NQF 2)	Electrical Workmanship (NQF 3 & 4)
Electronic Control & Digital Electronics (NQF 2, 3 & 4)	

Career Opportunities: Sound Technology, Industrial and Technical Engineering, etc.

Engineering And Related Design

English First Additional Language, Mathematics & Life Orientation

Engineering Fundamentals (NQF 2)	Engineering Graphics & Design (Auto CAD) (NQF 3)
Engineering Technology (NQF 2)	Engineering Process (NQF 4)
Engineering Systems (NQF 2)	Professional Engineering Practise (NQF 4)
Automotive Repair & Maintenance OR Welding (NQF 2, 3 & 4)	Applied Engineering Technology (NQF 4)
Engineering Practice & Maintenance (NQF 3)	
Materials Technology (NQF 3)	

Career Opportunities: Tool Making, Fitting and Machining, Petroleum Engineering, Automotive Repairs, Welder, etc.

SKILLS PROGRAMME

- National Certificate Building & Civil Construction
- National Certificate Electrical
- National Certificate Furniture Making
- National Certificate Community House Building
- General Maintenance
- Motor Mechanics
- Welding

NATED

Level: N4, N5 and N6

Duration: 6 Months per level (full time)

Minimum Requirements: N4 (Senior Certificate or National Certificate N3 or Grade 12 or an equivalent qualification. An admission test may be required).

National Diploma: All students who have completed their N6 certificate are required to complete 18 months of practical in-service training in their relevant field of study (certified by the employer), to qualify for a National 'N' Diploma (NQF).

ENGINEERING PROGRAMMES (N2-N3)

Electrical Engineering
Mechanical engineering

ENGINEERING PROGRAMMES (N4-N6)

Civil Engineering

Quantity Surveying (N 4, 5 & 6)	Building and Structural Construction (N 4, 5 & 6)
Building Administration (N 4, 5 & 6)	Building and Structural Surveying (N 4, 5 & 6)

National Diploma: Certified Civil Engineer, Site Foreman

Electrical Engineering

Mathematics (N 4, 5 & 6)	Engineering Science (N 4)
Industrial Electronics (N 4, 5 & 6)	Power Machines (N 5 & 6)
Electrotechnics (N 4, 5 & 6)	

Career Opportunities: Certified Electrical Engineer, Site Foreman

Mechanical Engineering

Mathematics (N 4, 5 & 6)	Supervisory Management (N 4, 5 & 6)
Mechanotechnics (N 4, 5 & 6)	Strengths of Materials & Structures (N 5 & 6)
Engineering Science (N 4)	

Career Opportunities: Certified Mechanical Engineer, Site Foreman

SKILLS COURSES (FULL-TIME)

Duration: 6 months

Basic Computer Skills: Bricklaying and Plastering, Carpentry, Domestic Electrical, Motor Vehicle Repairs, Plumbing & Drain Laying and Welding

Part-time courses are also offered, please enquire at the campus

ENROLMENT

For annual programmes, students must pre-enrol at the end of the year, for the following academic year. Enrolment forms must be accompanied by proof of payment of the non-refundable registration fee. Please bring a certified copy of your id and latest school report or certificate for enrolment purposes. Contact the campus for further information. All courses are subject to student numbers.

COURSE FEES

Fees are payable strictly in advance, are subject to change and non-refundable. Cash is not accepted on premises. When enrolling, you will be provided with banking details in order to deposit fees at any branch of First National Bank.

BURSARY

Elangeni College now offers bursaries for qualifying NCV and Nated students (through the DHET Financial Aid Scheme). Interested applicants must contact their nearest campus for more details or application information. Applications may be submitted when registering for an Elangeni College programme. Terms & Conditions apply.

ACCOMMODATION

A ladies hostel is available at Pinetown Campus.

STUDENT SUPPORT SERVICES (SSS):

Are available to our students. These include: academic support, tutorials, bursary assistance, career guidance, counselling, life skills programme, etc.

Please Note: NCV Engineering and ICT programmes have maths as a compulsory subject. All other programmes have maths literacy. Proficiency will be required accordingly.

*NQF: National Qualifications Framework



Who are we?

Elangeni College for FET strives to be a self-reliant Further Education and Training College that provides meaningful education and training.

The programmes offered are customized and responsive to the needs of learners and industry; the careers they encourage are essential for the economic upliftment of the South African economy. An FET vocational programme will equip you for a successful career.

ENROLMENT

For annual programmes, students must pre-enrol the end of the year, for the following academic year. Enrolment forms must be accompanied by proof of payment of the non-refundable registration fee. Please bring a certified copy of your ID and latest school report or certificate for enrolment purposes. Contact the Campus for further information. All courses are subject to student numbers.

COURSE FEES

Fees are payable strictly in advance, are subject to change and no-refundable. Cash is not accepted on premises. When enrolling, you will be

provided with banking details in order to deposit fees at any branch of First National Bank.

BURSARY

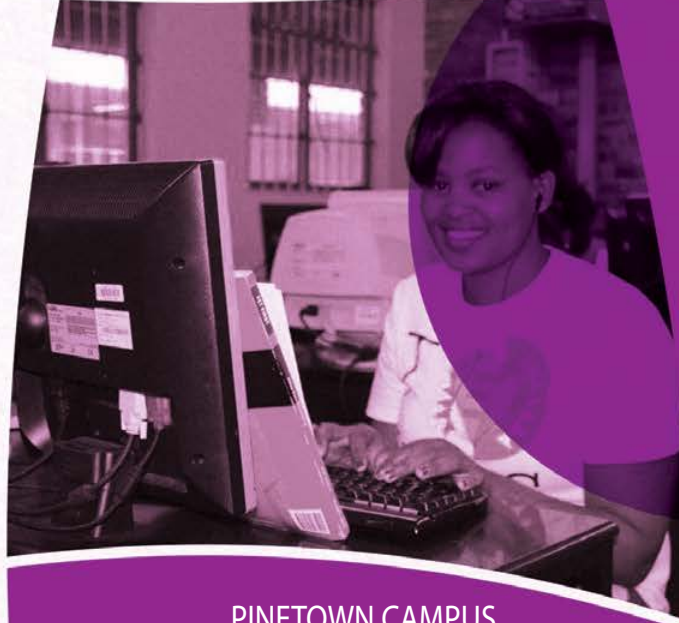
Elangeni College now offers bursaries for qualifying NCV and Nated students (through the DHET Financial Aid Scheme). Interested applicants must contact their nearest campus for more details.

ACCOMMODATION

A ladies hostel is available on Campus.

Student Support Services (SSS) are available to our students. These include: Academic Support, Tutorials, Bursary Assistance, Career Guidance, Counselling, Life Skills Programme, etc.

Please note: NCV Engineering and ICT programmes have Maths as a compulsory subject. All other programmes have Maths Literacy. Proficiency will be required accordingly.



Pinetown Campus

PINETOWN CAMPUS

38 Bamboo Lane, Pinetown.

Tel: 031 702 3260

CENTRAL OFFICE

General Enquiries: info@elangeni.edu.za

Tel: 031 716 6700 | Fax: 031 716 6777

Physical: 15 Portsmouth Road, Pinetown, 3600

Postal: Private Bag X9032, Pinetown, 3610



Elangeni College
Technical Vocational Education and Training

Towards

Betterment

Eight
Campuses

Full Time
Programmes

Part-time
Programmes

Distance
Education

www.elangeni.edu.za

CAMPUS BROCHURE

Pinetown

Information Technology & Computer Science

English First Additional Language, Mathematics & Life Orientation

Introduction to Information Systems (NQF 2 only)	Computer Hardware & Software (NQF 3 only)
Electronics (NQF 2 only)	Principles of Computer Programming (NQF 3 only)
Introduction to System Development (NQF 2 only)	Project Management (NQF 3 & 4)
Electronic Control and Digital Electronics (NQF 2 & 3)	Data Communication & Networking (NQF 4 only)
Systems Analysis & Design (NQF 3 & 4)	Computer Programming (NQF 4 only)

Career Opportunities: Computer programming, Information Technology Management, Computer Systems, Engineering, Data processing, etc.

Office Administration

English First Additional Language, Maths Literacy & Life Orientation

Business Practice (NQF 2, 3 and 4)	Applied Accounting (NQF 2, 3 and 4)
Office Practice (NQF 2, 3 and 4)	New Venture Creation (NQF 2, 3 and 4)
Office Data Processing (NQF 2, 3 and 4)	

Career Opportunities: Office Management, Admin Clerk, Filing Clerk, Receptionist, Telephonist, General Administration, etc.

Tourism

English First Additional Language, Maths Literacy & Life Orientation

Science of Tourism (NQF 2, 3 and 4)	Tourism Operations (NQF 2, 3 and 4)
Client Services & Human Relations (NQF 2, 3 and 4)	Client Services & Human Relations (NQF 2, 3 and 4)
Sustainable Tourism in South Africa (NQF 2 only)	Sustainable Tourism in South Africa & Regional Travel (NQF 3 only)
Sustainable Tourism in South Africa & International Travel (NQF 4 only)	

Career Opportunities: Accommodation Management, Conference etc.

Hospitality

English First Additional Language, Maths Literacy & Life Orientation
Hospitality Generics (NQF 2, 3 & 4), Hospitality Services (NQF 2, 3 & 4)

Hospitality Generics (NQF 2, 3 and 4)	Food Preparation (NQF 2, 3 and 4)
Hospitality Services (NQF 2, 3 and 4)	Client Services & Human Relations (NQF 2, 3 and 4)

Career Opportunities: Hotel Management, Chef, Accommodation etc.

Finance Economics & Accounting

English First Additional Language, Maths Literacy & Life Orientation

Applied Accounting (NQF 2, 3 and 4)	Financial Management (NQF 2, 3 and 4)
Economic Environment (NQF 2, 3 and 4)	New Venture Creation (NQF 2, 3 and 4)

Career Opportunities: Private and Public Accounting, Banking etc.

NSF SKILLS PROGRAMMES

National Certificate Sports Administration, ICDL

Occupational Programmes

Level: National Qualifications Framework Level 4 and 5

Duration: 2 year full-time study (a Certificate exit opportunity exists after 1 year)

Minimum Requirements To Enter: Grade 12 pass or equivalent; Personal interview

Certificate in General Travels (NQF 4)	Diploma in Retail Travel (NQF 5)
Certificate in Food & Beverage Management (NQF 4)	Diploma in Food & Beverage Management (NQF 5)
Certificate in Professional Cookery (NQF 4)	Diploma in Professional Cookery (NQF 5)

NATED PROGRAMMES: ENGINEERING (N2-N3)

Electrical Engineering
Mechanical Engineering

NATED COURSES: BUSINESS STUDIES

Level: N4, N5 and N6

Duration: 6 Months per level (Part-time/Distance options available on enquiry)

Minimum Requirements: N4: Senior Certificate or National Certificate N3 or Grade 12 or an equivalent qualification. An admission test may be required.

National Diploma: All students who have completed their N6 certificate are required to complete 18 months of practical in-service training in their relevant field of study (certified by the employer), to qualify for a National 'N' Diploma (NQF 5).

Financial Management

Financial Accounting (N 4, 5 & 6)	Entrepreneurship (EBM) (N 4 & 5)
Management Communication (N 4, 5 & 6)	Entrepreneurship and Business management (N 6)
Computerised Financial Systems (N 4, 5 & 6)	Income Tax (N 4, 5 & 6)

Employment Opportunities: Financial Manager, Bookkeeping, Accounting, Self Employment

Management Assistant

Communication (N 4, 5 and 6)	Office Practice (N 4, 5 and 6)
Information Processing (N 4, 5 and 6)	Computer Practice (N 6)
Computer Practice or Entrepreneurship (EMB) (N 4 and 5)	

Employment Opportunities: Personal Assistant, Typist, Administrator, Receptionist, Secretary

Business Management

Computer Practice (N 4, 5 and 6)	Financial Accounting (N 4, 5 and 6)
Entrepreneurship (EBM) (N 4, 5 and 6)	Management Communication (N 4)
Sales Management (N 5 and 6)	

Employment Opportunities: Business Sector, Office Manager, Self-Employment, Public Sector

Human Resource Management

Computer Practice (N 4 and 5)	Personnel Training (N 5 and 6)
Entrepreneurship (EBM) (N 4 and 5)	Personnel Management (N 6)
Financial Accounting (N 4 and 5)	Labour relations (N 6)
Management Communication (N 4)	Economics (N4) (N 6)

Employment Opportunities: Human Resource Manager/Assistant, Self-Employment etc.

ENGINEERING PROGRAMMES (N2 - N3)

Electrical Engineering
Mechanical Engineering

SKILLS PROGRAMME (6 MONTHS/LEVEL)

Basic Computer Skills
Mail and internet User

Who are we?

As a public Further Education and Training (FET) provider, Elangeni College for FET strives to be a self-reliant Further Education and Training College that provides meaningful education and training. This will equip you with the qualifications and skills to start out on a chosen career path.

With Elangeni College, support is given to Life Long Learning and students are taught by trained assessors and moderators that ensure quality delivery in an assortment of subject fields. The programmes offered are customized and responsive to the needs of learners and industry; the careers they encourage are essential for the economic upliftment of the South African economy. An FET vocational programme will equip you for a successful career in an industry that has great need for your practical skills, experience and knowledge.

FET College play a catalytic role in the economic empowerment of people by providing relevant education and training; with six campuses throughout Durban, Elangeni College provinces integrated theoretical and practical experience to the community. Make the right choice now and get your future on track!



Elangeni College
Technical Vocational Education and Training

Towards

Betterment

Eight
Campuses

Full Time
Programmes

Part-time
Programmes

Distance
Education

Qadi Campus

www.elangeni.edu.za

QADI CAMPUS

Zulu Reserve Road, Botha's Hill

Tel: 031 777 1742

CENTRAL OFFICE

General Enquiries: info@elangeni.edu.za

Tel: 031 716 6700 | Fax: 031 716 6777

Physical: 15 Portsmouth Road, Pinetown, 3600

Postal: Private Bag X9032, Pinetown, 3610

CAMPUS BROCHURE

Qadi

NATIONAL CERTIFICATE VOCATIONAL

(NQF* level 2, 3 and 4)

Minimum requirement to enter NQF level 2: Grade 9 pass or equivalent.

Duration: 1 year full-time study per NQF level.

The NCV consists of three fundamental subjects and four core subjects per programme.

Civil Engineering And Construction

English First Additional Language, Mathematics & Life Orientation

Construction Planning (NQF 2)	Construction Plant & Equipment (NQF 3)
Plant and Equipment (NQF 2)	Construction Materials (NQF 3 & 4)
Materials (NQF 2)	Construction Carpentry & Roof Work OR Construction Masonry & Tiling OR Construction Plumbing (NQF 3)
Carpentry & Roof Work OR Masonry & Tiling OR Plumbing (NQF 2)	Construction Supervision (NQF 4)
Drawing, Setting out, Quantities & Costing (NQF 3 & 4)	Civil & Construction Technology (NQF 4)

Career Opportunities: Plumbing, Carpentry, Masonry and Tiling, Architectural Technology, Town Planning, Quantity Surveying, Foreman, etc

Office Administration

English First Additional Language, Mathematics & Life Orientation

Business Practice (NQF 2, 3 & 4)	Office Data Processing (NQF 2, 3 & 4)
Office Practice (NQF 2, 3 & 4)	Applied Accounting OR New Venture Creation (NQF 2, 3 & 4)

Career Opportunities: Office Management, Admin Clerk, Filing Clerk, Receptionist, Telephonist, General Administration, etc.

Finance, Economics And Accounting

English First Additional Language, Mathematics & Life Orientation

Applied Accounting (NQF 2, 3 & 4)	Economic Environment (NQF 2, 3 & 4)
Financial Management (NQF 2, 3 & 4)	New Venture Creation (NQF 2, 3 & 4)

Career Opportunities: Private and Public Accounting, Banking, Financial Services, etc.

SKILLS COURSES (FULL TIME)

DURATION: 3 months

- Plumbing and Drain laying
- Basic Computer Skills
- Bricklaying



NATED COURSES: BUSINESS STUDIES

Level: N4, N5 and N6

Duration: 6 Months per level (Part-time/Distance options available on enquiry)

Minimum Requirements: N4 (Senior Certificate or National Certificate NE or Grade 12 or an equivalent qualification. An admission test may be required).

National Diploma: All students who have completed their N6 certificate are required to complete 18 months of practical in-service training in their relevant field of study (certified by the employer), to qualify for a National 'N' Diploma (NQF 5).

NATED PROGRAMMES N4-N6

Business Management

Computer Practice (NQF 2, 3 & 4)	Financial Accounting (NQF 2, 3 & 4)
Entrepreneurship (EBM) (NQF 2, 3 & 4)	Management Communication (NQF 2, 3 & 4)

Employment Opportunities: Business Sector, Office Manager, Self-Employment, Public Sector

PART – TIME courses are also offered, please enquire at the campus

ENROLMENT

For annual programmes, students must pre-enrol at the end of the year, for the following academic year. Enrolment forms must be accompanied by proof of payment of the non-refundable registration fee. Please bring a certified copy of your id and latest school report or certificate for enrolment purposes. Contact the campus for further information. All courses are subject to student numbers.

COURSE FEES

Fees are payable strictly in advance, are subject to change and non-refundable. Cash is not accepted on premises. When enrolling, you will be provided with banking details in order to deposit fees at any branch of First National Bank.

BURSARY

Elangeni College now offers bursaries for qualifying NCV and Nated students (through the DHET Financial Aid Scheme). Interested applicants must contact their nearest campus for more details or application information. Applications may be submitted when registering for an Elangeni College programme. Terms & Conditions apply.

ACCOMMODATION

A ladies hostel is available at Pinetown Campus.

STUDENT SUPPORT SERVICES (SSS):

Are available to our students. These include: academic support, tutorials, bursary assistance, career guidance, counselling, life skills programme, etc.

Please Note: NCV Engineering and ICT programmes have maths as a compulsory subject. All other programmes have maths literacy. Proficiency will be required accordingly.

*NQF: National Qualifications Framework